

WorkFit-Z Mini

- Offers a sit-stand solution with everything you need, like a phone and tablet slot for easy access to your devices and integrated cable management for a mess-free workspace
- Features a soft, grey woodgrain finish that complements your current desk furniture instead of serving as an unwanted focal point
- Provides infinite, click-free adjustments up to 12.5" (32 cm) and supports up to 25 lbs (11,4 kg)
- Easy set-up provides a no-fuss installation experience that gets you standing sooner—no tools (or sweat) needed



YOUR WORK. YOUR WAY. COMPACT SIT-STAND
DESK CONVERTER GETS YOU STANDING FASTER

The WorkFit-Z Mini is equipped with the features you need most – easy adjustment between sitting and standing, space for your smart devices and a grey finish that complements your office décor. Ideal for single monitors or notebooks, this compact standing desk converter allows you to turn your work surface into a height-adjustable standing desk with one simple movement. It's that easy. Together with a cable-free worksurface and comfortable keyboard tray, the WorkFit-Z Mini is an office essential for incorporating movement into your work day.

BENEFITS



WorkFit-Z Mini



WorkFit-Z Mini

Part #	33-458-917
Color	Dove grey woodgrain surface, black frame
Weight Capacity	≤ 25 lbs (11,4 kg)
Lift	12.5" (32 cm)
Worksurface Dimensions	31" x 15.5" (78,7 x 39,4 cm)
Keyboard Tray Dimensions	24.5" x 8.5" (62 x 22 cm)
Product Weight	32 lbs (14,5 kg)
Shipping Weight	42.3 lbs (19,2 kg)
Shipping Dimensions	34" x 27" x 8" (86,4 x 68,6 x 20,3 cm)
Warranty	2 years

Download additional resources at ergotron.com.

For more information:

NORTH AMERICA: 800.888.8458 / +1.651.681.7600 / sales@ergotron.com

EMEA: +31.33.45.45.600 / info.eu@ergotron.com

APAC: apaccustomerservice@ergotron.com

OEM: info@oem.ergotron.com

© Ergotron, Inc. 06.14.2018

Literature made in the U.S.A.

Content subject to change.

Ergotron devices are not intended to cure, treat, mitigate or prevent any disease.

ERGOTRON®



WorkFit-T

Invigorate your work day with this ultra simple and flexible sit-stand desktop workstation!

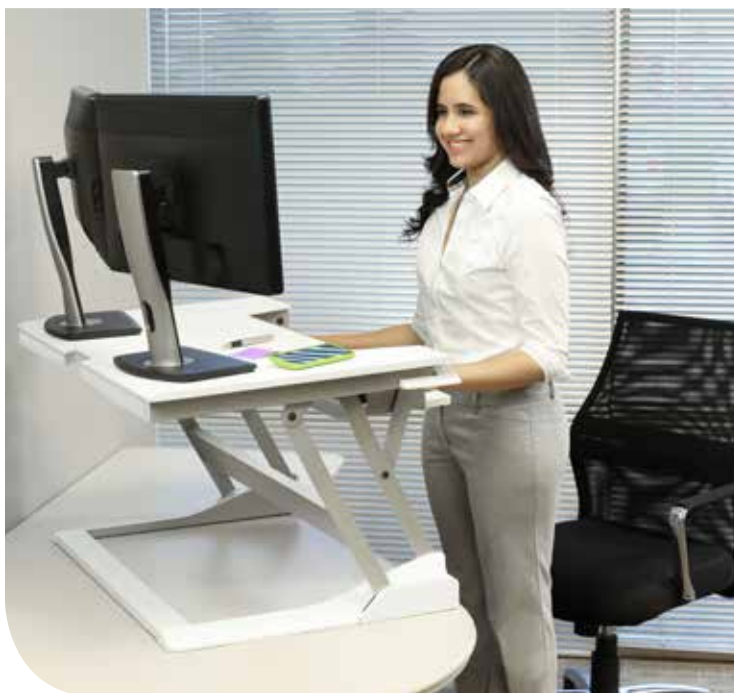
Tired of sitting in front of a computer all day? Ergotron's WorkFit-T desktop workstation promotes proper ergonomic positioning and inspires a healthier sit-stand work routine.

Counterbalancing mechanism uses Constant Force™ Technology to facilitate quick height adjustment; patent pending



- Stable workstation sits right on top of most surfaces 24" (61 cm) deep or larger; no mounting or clamping required
- System easily lifts straight up and down to minimize intrusion into the workspace
- Provides 15" (38 cm) of easy height adjustment
- Ships fully assembled - no tool adjustments needed - making it easy to retrofit existing spaces
- Set one or two monitors or a monitor and laptop directly onto the workstation surface; optional monitor kits sold separately
- Supports 10-35 lbs (4,5-15,9 kg) of external weight
- Keyboard moves in tandem with the worksurface and is positioned 4.5" (11,4 cm) below it
- Generous worksurface: 35" wide x 23" deep (88,9 cm x 58,4 cm)
- Five-year warranty: tested and guaranteed!

WorkFit-T arrives fully assembled and sits right on top of virtually any surface; it easily moves vertically 15" (38 cm) to provide sit-stand comfort for a broad range of users



WorkFit Monitor Kits (sold separately)



LCD & Laptop Kit
97-907 (black)
97-933-062 (white)



Single LD Monitor Kit
97-905 (black)
97-935-062 (white)





Dual Monitor Kit
97-904 (black)
97-934-062 (white)



Single HD Monitor Kit
97-906 (black)
97-936-062 (white)



**WorkFit-T
Sit-Stand Desktop
Workstation**

Part # (color)	33-397-085 (black) 33-397-062 (white)
 Weight Capacity	10-35 lbs (4,5-15,9 kg)
 Lift	15" (38 cm)
Shipping Dimensions	38.5" x 28" x 8.5" (87,8 x 71,1 x 21,6 cm)
Shipping Weight	58.5 lbs (26,5 kg)
Warranty	5 years



WORKFIT™

by *ERGOTRON®*

WorkFit-TX

- Delivers leading ergonomics sitting or standing with 17" (43,2 cm) of vertical height adjustment, plus 3" (6,2 cm) of keyboard adjustment
- Thoughtful, ultra-low design offers a sleek look and ergonomic fit for a wide range of users
- Large worksurface keeps office essentials nearby
- Drop-down tray places your keyboard at the most comfortable ergonomic position
- Offers infinite height adjustment points from an easy-to-find handle with no clicking
- Personalize your fit with multiple monitor riser locations and keyboard height and position
- Ships fully assembled with out-of-the-box installation that gets you standing faster
- Tested and guaranteed with a full five-year warranty



THE NEW STANDARD. FITS MORE PEOPLE.

Designed to offer advanced ergonomics out-of-the box, the WorkFit-TX Standing Desk Converter serves up a full 20" (50,8 cm) range of sit-stand motion to give you more flexibility and feel-goodness. The X-shaped lift folds down within inches of your desk for a sleek resting spot that's three inches below our competitors. It fits more users with an extremely low profile that keeps the right monitor to keyboard tray spacing. With a height-adjustable, back tilt keyboard that sits below the worksurface, this ultra-low sit-stand workstation offers the best of both worlds—leading ergonomics sitting and standing.

BENEFITS



JUST
STAND
.ORG

WorkFit-TX



DELIVERS LEADING ERGONOMICS SITTING OR STANDING WITH 17" (43,2 CM) OF VERTICAL HEIGHT ADJUSTMENT, PLUS 3" (6,2 CM) OF INDEPENDENT KEYBOARD ADJUSTMENT



Premium ergonomics any way you work



Keyboard tray raises and lowers 3" (6,2 cm)



ULTRA-LOW PROFILE COMBINED WITH HEIGHT-ADJUSTABLE KEYBOARD TRAY CREATES A COMFORTABLE FIT

INFINITE, CLICK-FREE HEIGHT ADJUSTMENT



WorkFit-TX	
Part # (color)	33-467-921 (black)
Weight Capacity	40 lbs (18,2 kg)
Lift	17" (43,2 cm)
Worksurface Dimensions	32" x 27" (81 x 68,5 cm)
Keyboard Tray Dimensions	28" x 8" (71 x 20 cm)
Product Weight	58.5 lbs (26,6 kg)
Shipping Weight	76 lbs (34,5 kg)
Shipping Dimensions	37.5" x 40" x 8" (95,3 x 101,6 x 20,3 cm)
Warranty	5 years

ERGONOMIC KEYBOARD TRAY TILTS BACKWARD 10°



Download additional resources at ergotron.com.
 For more information:
 NORTH AMERICA: 800.888.8458 / +1.651.681.7600 / sales@ergotron.com
 EMEA: +31.33.45.45.600 / info.eu@ergotron.com
 APAC: apaccustomerservice@ergotron.com
 OEM: info@oem.ergotron.com

© Ergotron, Inc. 08.29.2018
 Literature made in the U.S.A.
 Content subject to change.
 Ergotron devices are not intended to cure, treat, mitigate or prevent any disease.
 Patent information available at www.ergotron.com/patents.
 WorkFit is a registered trademark of Ergotron in the U.S.A. and China.

ERGOTRON®

ergotron[®]

moving you forward

Mobile Desk

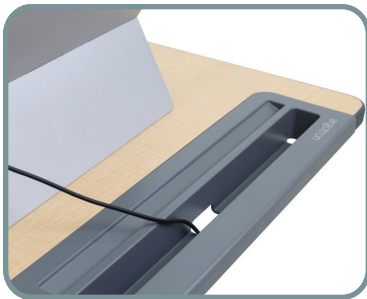
- Easy adjustment: Find the most comfortable, ergonomic height sitting or standing
- Premium casters: Moves effortlessly between conference rooms, offices and classrooms
- Stylish finish: Maple top adds warmth and a trendy accent color
- Large worksurface: Includes cup holder, tablet slot and pencil tray, plus backpack hook
- More productivity: Helps harness focus, drive collaboration and boost creativity
- No sweat set-up: Assembles in less than one minute—no tools needed
- Quality that lasts: Comes with a full 10-year warranty



MOVE WHEREVER YOUR WORK TAKES YOU

There's nothing more valuable in the modern spaces than flexible work and learning options that inspire creativity and collaboration. The Ergotron Mobile Desk moves with you throughout the office or school and adapts to how you want to work and where. Easily go from sitting or standing for instant collaboration with peers, and travel from individual workspaces to conference rooms and common areas and back again. Give employees and students the ability to work at their best with the freedom to move, collaborate and thrive.

Mobile Desk



CORDS ROUTE NEATLY THROUGH THE TABLET HOLDER FOR DEVICE CHARGING.



CHOOSE YOUR MOST COMFORTABLE WORKING HEIGHT WITH THE EASY-TO-REACH HANDLE.



Part # (color)	Americas 24-811-F13 (Maple & Silver)
Weight Capacity	15 lbs (6.8 kg)
Lift	16" (40.6 cm)
Worksurface Dimensions	24" x 22" (61 x 56 cm)
Product Weight	31 lbs (14 kg)
Shipping Weight	37 lbs (17 kg)
Shipping Dimensions	33" x 26" x 11" (84 x 66 x 28 cm)
Warranty	10 years

Download additional resources at ergotron.com.
 For more information:
 Americas: 800.888.8458 / +1.651.681.7600 / insidesales@ergotron.com
 EMEA: +31.33.45.45.600 / info.eu@ergotron.com
 APAC: apaccustomerservice@ergotron.com
 Custom: custom@ergotron.com

© Ergotron, Inc. 05.01.2020
 Literature made in the U.S.A.
 Content subject to change.
 Ergotron devices are not intended to cure, treat, mitigate or prevent any disease.
 Patent information available at www.ergotron.com/patents.



ACCESSORIES



Keyboard Trays



100-KD28
Keyboard drawer
Extra width for mouse
Available Finish: all standard
Innovations laminate finishes
and Black (BL)



100-COBRA
Spring-Assisted Adjustable Keyboard
Tray
Easy to use lever handle adjustment
Ergonomic design including wrist rest
Weight capacity: 2kg / 4.4 lbs
Tray tilt function 13° to 15°
Swivel range -180° to 180°
Mounting plate depth - 24.8"
Available Finish: Black (BL)



100-AKTM-2
Articulating Keyboard Tray
Large 26" w x 9.7" d tray
Holds up to 2.2 lbs
Height adjustment - 4 1/4"
Tilting adjustment - 16° / +20°
Telescoping tray slides completely
under the work surface
Requires 13 1/2" of depth clearance
under the work surface
Vinyl wrapped MDF construction
with wrist rest
Optional brackets to lower the
mechanism and clear obstructions
under the work surface. Clears 2 1/4"
Available Finish: Black (BL)



100-KB2
Articulating Keyboard Tray
Track mount hide-away design with 12.75"
slide travel distance
18.5" clearance needed for install
Height adjustment (6.75")
Swivel range: -20° to 20°
Heavy-duty steel construction provides
extra strength & durability
Available Finish: Black (BL)



100-PD
Moulded plastic pencil drawer
Available Finish: Black (BL)



100-DRAWER
Metal Storage Drawer
Undermount, space-saving storage
drawer ideal for sit-to-stand applications
Solid steel construction w/ slim, flush
mount design
Smooth glide drawer mechanism -
drawer track travel 170mm (6.7")
Weight capacity: 5kg / 11 lbs
Compatible with calypso height
adjustable desking 30" deep or greater
Available Finish: Black (BL)

Power Options



100-FTP-DATA
Flush flip top power grommet
3 power, 2 data
Includes 10' power cord, UL certified
Streamline profile with hidden
receptacles when in flipped position
Site install required
Available Finish: Black (BL)



100-FTP-USB
Flush flip top power grommet
3 power, 2 USB, 1 data
Includes 10' power cord, UL certified
Streamline profile with hidden
receptacles when in flipped position
Site install required
Available Finish: Black (BL)



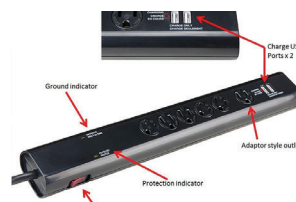
100-GRP-USB
Power grommet with USB
5' cord, UL certified
1 USB, 1 power
2.36" / 60mm hole size
Site install required
Available Finish: Black (BL)



100-WCD-USB
Wireless & USB charging drawer
5' cord, UL certified
1 USB, 1 power
2.36" / 60mm hole size
Site install required
Available Finish: Black (BL)



100-DTP2-USB
Clamp to edge of desk or clamp through
our grommet holes (clamp width 60mm)
Fit existing HDL & Heartwood standard
rectangular grommet holes!
2 power
2 USB charging (charging only)
angled, bracket mount design
6' power cord
cUL certified for use in Canada
Available Finish: Black (BL)



100-PB6-USB
USB charger - 2- 2.1AMP ports - 5V DC
- 2.1A per port
USB charging only
6 - AC 120V ground plugs
10' power cord with 90° plug
cUL certified for use in Canada
Available Finish: Black (BL)

ACCESSORIES



Monitor Arms



100-MA1B
 Desk clamp and/or grommet mount
 14" height adjustment range: 5"– 19"
 24.0" arm extension
 90° monitor tilt /90° VESA rotation
 4.4 lbs.–19.8 lbs. weight capacity
 Exceeds BIFMA x5.5 requirements
 10yr warranty
 Finger touch height adjustment
 VESA quick release
 36.0" max. monitor
 Available Finish: Black (BL) or Silver (SL)



100-MA2B
 Desk clamp and/or grommet mount
 14" height adjustment range: 5"– 19"
 24.0" arm extension
 90° monitor tilt /90° VESA rotation
 4.4 lbs.–19.8 lbs. weight capacity (per arm)
 Exceeds BIFMA x5.5 requirements
 10yr warranty
 Finger touch height adjustment
 VESA quick release
 32.0" max. monitor
 Available Finish: Black (BL) or Silver (SL)



100-MA1
 Pneumatic monitor arm - single
 Capacity: 19.8 lbs
 Clamp to desk or grommet mount
 Landscape or portrait orientation
 Holds monitor 13" - 30"
 90° swivel angle
 180° rotation in both directions
 15° tilt angle
 Available Finish: Black (BL) or Silver (SL)



100-MA2
 Pneumatic monitor arm - double
 Capacity: 16 lbs per arm
 Clamp to desk or grommet mount
 Landscape or portrait orientation
 Holds monitor 13" - 30"
 90° swivel angle
 180° rotation in both directions
 15° tilt angle
 Available Finish: Black (BL) or Silver (SL)



100-LPTP
 Laptop holder attachment for
 pneumatic monitor arms
 Compatible with 100-MA1, 100-MA2
 100-MA1B & 100-MA2B
 Fits laptop 11" to 15.6"
 Easy install
 Available Finish: Black (BL)



100-LCD1
 LCD single monitor arm
 Capacity: 22 lbs
 Grommet mount
 Available Finish: Silver (SL)



100-LCD2
 LCD dual monitor arm
 Capacity: 13.2 lbs per arm
 Grommet mount
 Available Finish: Black (BL) or Silver (SL)

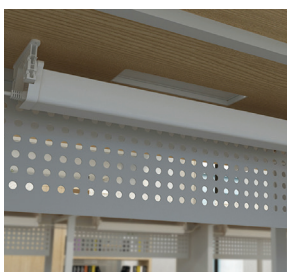
Wire Management



100-WIRE
 Wire management kit
 Includes 5 hangers and mounting
 hardware
 Available Finish: Light Grey (GR)



100-WM1300
 Wire management for height
 adjustable
 Length can be easily changed
 Available Finish: Black (BL), Silver (SL)
 or White (WH)



100-WMT22
 22" Wire Management Tray
 Easy accessibility
 Interlocking units for easy expansion
 Available Finish: White (WH)

ACCESSORIES



CPU Holders



100-MCPU
Mobile CPU holder
Adjustable for different width CPU units
Available Finish: Black (BL)



100-2-HCPU
Hanging CPU holder
Fixed location install
Adjustable for different width CPU units
Durable heavy-gauge steel
Mounting hardware included
Available Finish: Black (BL) & White (WH)



100-HCPU
Track installed, retractable hanging CPU holder
Track depth 16"
Adjustable for different width CPU units
Swivels 360 degrees
Supports CPU up to 50lbs
Durable heavy-gauge steel
Mounting hardware included
Available Finish: Black (BL)

Grommets



100-GR1
2" x 3" Rectangular Grommet
Site install required
Available Finish: Black (BL) & Grey (GR)

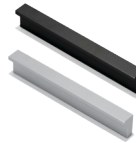


100-GR3
3" Round Grommet
Site install required
Available Finish: Black (BL)

Handles



Aluminium Scoop - 2 Sizes
Default handle for Evening Zen & Grey Dusk. Order separately to retrofit other laminate finishes.
Available finish: Aluminium (AL)



Bar
Default handle for Winter Wood laminate finish is Aluminium Bar. Order separately to retrofit other laminate finishes or for Black Bar handles
Available finish: Black (BL) & Aluminium (AL)



Black Scoop - 2 Sizes
Default handle for Autumn Maple, Sugar Maple, Hardrock Maple & Royal Mahogany laminate finishes. Order separately to retrofit other laminate finishes.
Available finish: Black (BL)



Step - 2 Sizes
Optional handles. Order separately.
Available finish: Champagne (CP)

Task Lights

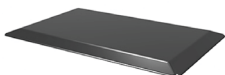


100-LED36TL - 36"
100-LED48TL - 48"
LED task light
160° swivel feature
Max Watt is 180W in-line
Built-in occupancy option
Available Finish: Aluminium (AL)



100-24TL - 24"
100-36TL - 36"
100-48TL - 48"
Fluorescent task light
Available Finish: Black (BL)

Anti-fatigue Mat



100-2030AFM
PVC with a high-density polyurethane core
Easy clean
Able to withstand common house fluids such as grease & liquids
non-curling bevelled edges
Available Finish: Black (BL)

ACCESSORIES



Storage



100-MMPUF
Metal Mobile Storage
 Box/box/file
 All drawers lock
 Can be keyed alike see 100-COREPACK
 Available Finish: Black (BL), Titanium (TT) and White (WH)



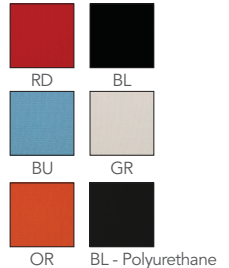
100-MMPFF
Metal Mobile Storage
 File/file
 All drawers lock
 Can be keyed alike see 100-COREPACK
 Available Finish: Black (BL), Titanium (TT) and White (WH)



100-MMPF
Metal Mobile Storage
 Box/file
 All drawers lock
 Heavy-duty casters
 Max. additional weight capacity 220lbs
 Can be keyed alike see 100-COREPACK
 Available Finish: Black (BL) & Titanium (TT)



100-MMPF-CUSHFA (Fabric)
100-MMPF-CUSHPU (Polyurethane)
Metal Mobile Pedestal Cushion
 Optional cushion
 Pedestal sold separately
 Easy velcro attachment
 For use with 100-MMPF **ONLY**



100-COREPACK
 Locking units ship with random key numbers unless units need to be keyed alike.
 For Keyed alike units order 100-COREPACK -the number of keyed alike units
 Example: 100-COREPACK-3 for three units keyed alike

Desk Top Height Adjustable Unit

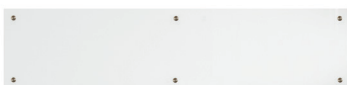


100-DTHA
 Converts traditional desk to standing desk
 Adjusts to heights between 6.5" & 16"
 Gas strut for easy height adjustment
 Durable construction
 Compatible with pneumatic monitor arms
 Available finish: Black (BL)



100-2-DTHA
 Heavy-duty steel & melamine construction for maximum stability
 Includes anti-slip pads on base
 Squeeze lever height-adjustment design
 Keyboard weight capacity: 2 kg / 4.4 lbs
 Height range 160mm - 445 mm / 6.3" -17.5"
 Compatible with pneumatic monitor arms
 Available finish: Black (BL)

Glass Whiteboard



INV-1668MB
16" x 68" Glass Dry Erase Whiteboard
 Includes all mounting hardware
 Suitable for wall mount
 Fits inside 72" hutch cavity
 Available finish: White Glass (WH)



INV-2434MB
24" x 34" Glass Dry Erase Whiteboard
 Includes all mounting hardware
 Suitable for wall mount
 Available finish: White Glass (WH)